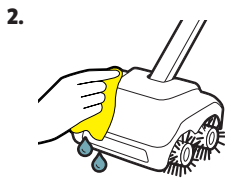


Maintenance and storage

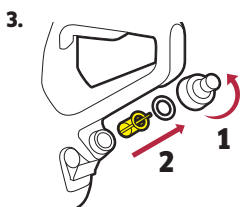
KÄRCHER



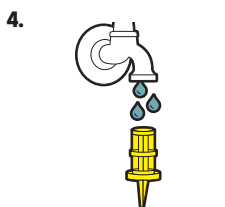
Remove soiling, plant residue and sand/stone from the brush



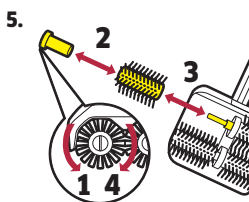
Clean the device with a moist cloth



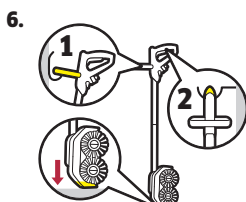
Cleaning water filter 1



Cleaning water filter 2



Replacing/changing the brushes



Storage positions

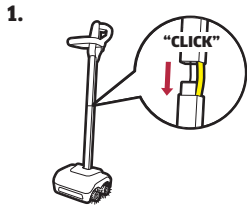


Do not clean the device with a hose or high-pressure water jet and never immerse it in liquids

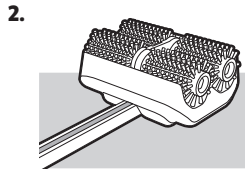
PCL 6 QUICKSTART GUIDE



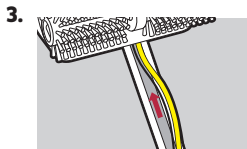
First assembly



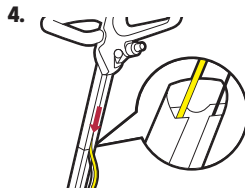
Plug handle section together



Place the device on the floor so that the brushes are facing upwards



Push approx. 15 cm of cable & hose into cable channel. Slide protruding cable & hose firmly into brush head casing

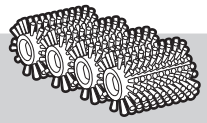


Press hose & cable into cable channel from top to bottom



How to video:
hose and cable installation

Application



Included brushes: for wood/WPC floors only. Brushes for smooth & fine-pored stone tiles/slabs available as special accessory.

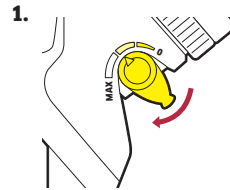


app support

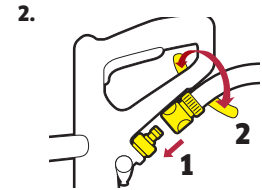


Download the Home & Garden App for full support in cleaning

Operation



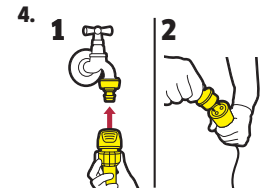
Close the water volume regulation valve



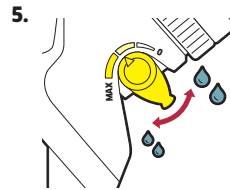
Connect water hose and secure it to handle with Velcro



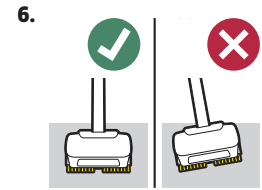
Remove coarse dirt before cleaning with the device



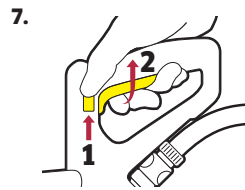
Connect water hose to tap and mains cable to extension cable



Open the water volume regulation valve



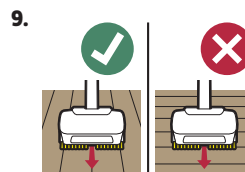
Position brushes evenly on the surface to be cleaned



Press the unlocking button and the power switch



Guide brushes over surface forwards and backwards without any pressure



Always clean wooden surfaces in the direction of the grain and along the floorboards



Do not apply any weight and do not stand on the device