

Shelters

Köln K3 d/b BS

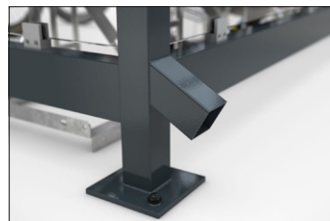
Elegant, versatile, flexible and with type statics

Hot-dip galvanised flat roof steel construction with a weatherproof troughed sheet roof in variable sizes, selectable side walls and pre-approved type statics.

| Article number | EAN | Width | Height | Depth |
|----------------|---------------|---------|---------|---------|
| 102001419 | 4250366531335 | 3180 mm | 2510 mm | 2165 mm |



| | |
|---------------|----------------------------|
| Clear width | 3060 mm |
| Clear height | 2360 mm |
| Clear depth | 2105 mm |
| Roof style | Flat roof |
| Roof type | Troughed sheet |
| Colour | RAL 7016 - Anthracite grey |
| Base area | 6,40 m ² |
| Mounting type | Floor mounting |
| Base material | Steel |
| Snow load | 1,45 kN/m ² |



Versatility and flexibility are already built into our timelessly elegant „Köln“ shelter system. The „Köln“ is available in several sizes and colours, with variable roof lengths and widths and optimised for your application. Printable toughened safety glass fastened with glass holders or other materials are available for the rear and side panels. Even systems with protected interior

and access doors can be realised. The drainage takes place via ground-level gargoyles. The „Köln“ is suitable for very high wind loads and snow loads and can be set up everywhere thanks to certified type testing without additional static testing being required. Custom coating in at least C4 medium quality is also offered. Ready assembled or as a kit.

- + Hot-dip galvanised flat roof steel construction
- + Side- and back walls available in different variants
- + Custom painting in min. C4 medium quality
- + Type statics for high wind and snow loads
- + Available with a wide range of accessories