



Rack-Mammut® Rack End Double Rail Barrier 1200 mm

Technical data sheet



The Rack End Double Rail Barrier is the ideal solution for frontal rows of shelving. Thanks to its two planks, it protects the vulnerable racking structure from impacts from heavy industrial trucks. Impacts are absorbed and the rack end double barrier returns to its original shape.



For high traffic

PRODUCT SPECIFICATIONS

Product features	High-performance, durable special plastic absorbs any impact energy and returns to its original shape. It offers extremely low maintenance and repair cost savings on barriers, racking systems, and industrial trucks.	
Material	Polyolefin, UV-resistant, fire class HB, non-conductive, impermeable to most chemical products.	
Colour	Yellow / Black	
Base plate	Steel black lacquered	INOX (RVS 304) No lacquer/coating

IMPACT TEST PARAMETERS & VALUES PER PAS 13:2017, Sec. 7.5

Test conditions	Height impact:	384 mm
	Pendulum Mass (kg):	674,8 kg
	Pendulum Arm Length (m):	1,65 m
	Pendulum Angel (Radius°):	83,1°
	Pendulum Speed (m/s):	5,33 m/s
	Kinetic Energy	
	90° impact (Joule):	9.112 J
	45° impact (Joule):	18.224 J
	Deflection (mm):	20 mm

DIMENSIONS

Length/Height	1200 mm / 600 mm
Ø	Ø 180 mm base / Ø 144 mm connecting tube
Base plate (WxLxH)	210 mm x 210 mm x 10 mm

SPEED / KG SAMPLE CALCULATION

Reference speed	7,5 km/h	For a vehicle with a gross weight of 8.400 kg with an impact angle of 45°
Calculation	$\frac{1}{2} \text{ Mass (kg)} \times \text{Speed}^2 \text{ (m/s)} = \text{Joules}$ (Formula applies for an impact angle of 45°)	

FIXING

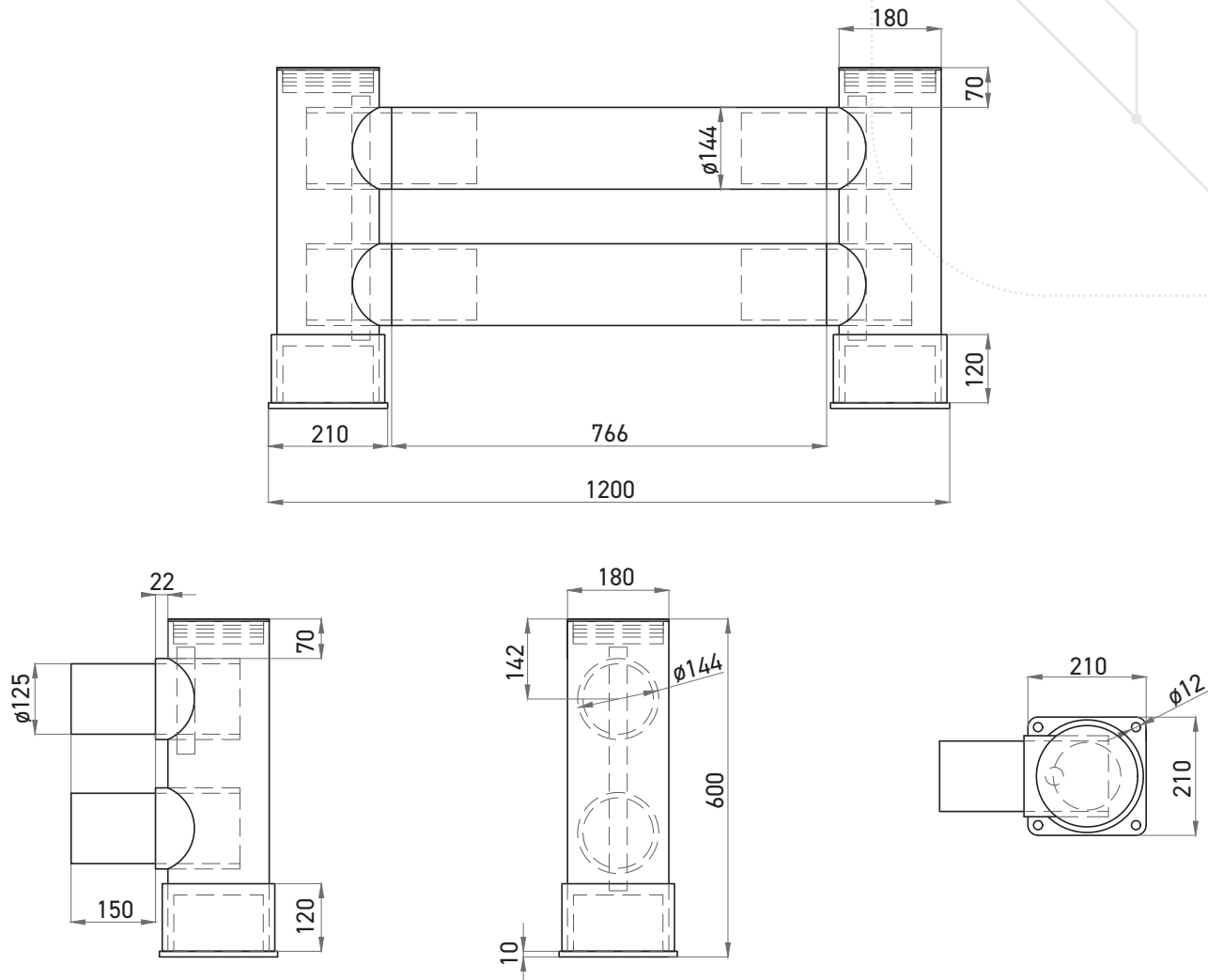
Heavy-duty concrete anchor	L = 110 mm ; Ø = 12 mm ; M12 45 Nm max. tightening torque 19,7 kN min. pull-out force
----------------------------	---





Rack-Mammut® Rack End Double Rail Barrier 1200 mm

Technical data sheet



Watch the test
video here!