

LEDsBIKE COMPACT 100 SET



Up to 100 Lux

The powerful LED technology provides powerful illumination of up to 95 meters



Battery life up to 12 hours (front light), 13 hours (rear light)

Ideal for long bike rides or commutes without having to worry about recharging



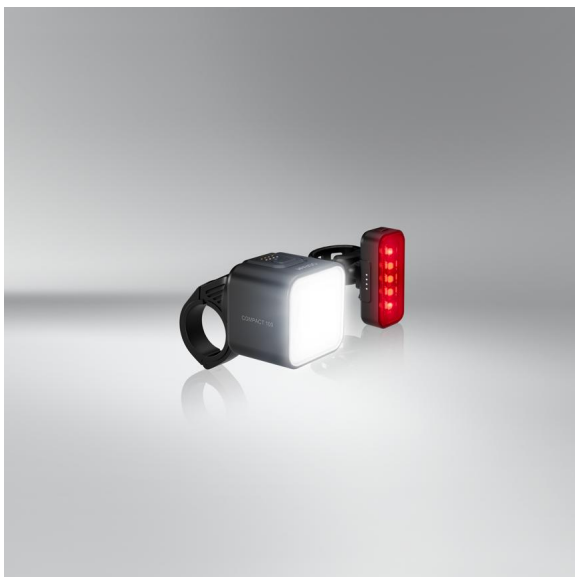
Automatic mode

The integrated brightness sensor automatically adjusts the light intensity to the ambient light



Rear light with automatic mode and brake light function

For greater visibility in road traffic



Enhanced vision and visibility for every ride

The LEDsBIKE COMPACT 100 SET lights up your ride with powerful illumination—offering up to 100 lux brightness and a light beam of up to 95 meters for enhanced visibility and safety on the road.

Adaptable lighting for every situation:

The front light offers multiple modes – automatic or manual – and three brightness levels (100 %, 50 %, 25 %). An integrated sensor adjusts the light automatically to the surroundings, while the intelligent rear light features an automatic mode and a brake light for extra safety.

Long-lasting power, easy charging:

With a battery life of up to 13 hours¹⁾, it is ideal for long journeys or commutes without having to worry about recharging. The included USB-C cable ensures convenient charging, while the battery and charging indicator keeps you informed at all times. The front light fully charges in 3 hours. The rear light only takes 2 hours to charge.

Compact, durable, and weather-resistant:

The lightweight design features a durable black ABS housing with a transparent acrylic lens. Thanks to the Garmin-compatible mounting bracket, it fits handlebars from 22.2 mm to 35 mm securely and effortlessly. Certified according to German StVZO and with IP54 protection, it

resists rain, splashes, and dust – keeping you visible in all weather conditions.

Backed by a 2-year OSRAM guarantee¹⁾, it's the ideal choice for cyclists who value safety, quality, and worry-free commuting.

Product datasheet

Technical data

Product information

Application (Category and Product specific)	LED Bike Lights
Product legal advice 1	1) For precise conditions refer to: www.osram.com/am-guarantee

General Product Information

Global order reference	LEDBL105 SET
------------------------	--------------

Electrical Data

Nominal voltage	3.7 V
-----------------	-------

Photometric Data

Color temperature	5400 K
Lux Value	100
Light distance at 1lx	95 m
Light color LED	Cold white

Lifetime Data

Guarantee	2 years
-----------	---------

Additional product data

Type of Battery	Lithium Ion
Charging Type	USB-C
Charging time	Front: 3 hr Rear: 2 hr
Setting	Front: High (100%), Low (50%), Eco (25%), Automatic Rear: Steady, Automatic
Usage time	Front: 12 h (Eco), 6 h (Low), 4 h (High)Rear: 13 h

Capabilities

Technology	LED
------------	-----

Certificates & standards

Type of protection	IP54
Standards	StVZO

Environmental & Regulatory Information

Information according Art. 33 of EU Regulation (EC) 1907/2006 (REACH)

Product datasheet



Primary article identifier	4062172426022
Declaration no. in SCIP database	In work

Logistical Data

Product code	Product description	Packaging unit (Pieces/Unit)	Dimensions (length x width x height)	Volume	Gross weight
4062172426022	LEDsBIKE COMPACT 100 SET	Hanging Folding Box 1	115 mm x 55 mm x 165 mm	1.04 dm ³	246.00 g
4062172426039	LEDsBIKE COMPACT 100 SET	Shipping carton box 4	240 mm x 132 mm x 196 mm	6.21 dm ³	1164.00 g

The mentioned product code describes the smallest quantity unit which can be ordered. One shipping unit can contain one or more single products. When placing an order, for the quantity please enter single or multiples of a shipping unit.

Download Data

File	
	User instruction G15142899 UI LEDsBIKE SET COMPACT 100 LEDBL105
	User instruction GPRS_Safety symbols instructions

Safety advice

For detailed application information, please refer to the product data sheet and the user instruction

Legal advice

1) For precise conditions refer to: www.osram.com/am-guarantee

Application advice

For more detailed application information and graphics please see product datasheet.

Disclaimer

Subject to change without notice. Errors and omission excepted. Always make sure to use the most recent release.

