

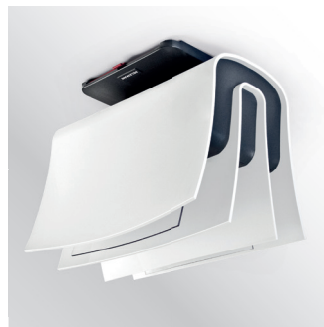
Thermal Binding Machine 8.2

PELEMAN®
Because It Matters



peleman.com
Visit our website

www.paper.com

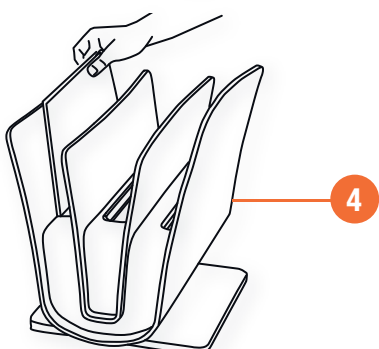
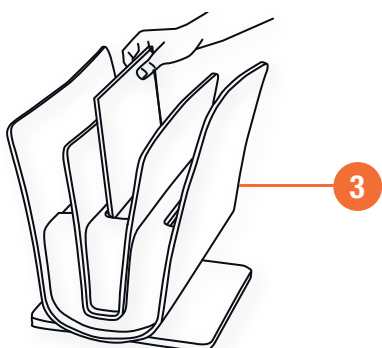
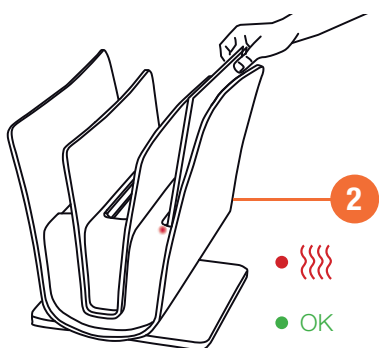


PELEMAN®
Because It Matters

Dear Customer,

Thank you for choosing a **PELEMAN** binding system.

Follow this manual carefully for the safe installation and use of Thermal Binding Machine 8.2. Save this document for future reference.



Voltage and type

For the type and line voltage we refer to the serial number on your machine. This machine is manufactured in accordance with the safety precautions. Check if the voltage of the machine complies with the line voltage.

Ambient operation and storage environments

- Operating: 10°C to +40°C
- Storage: -20°C to +80°C
- Humidity: 35% to 90% Relative Humidity (with no icing or condensation)

Installing your binding machine

- Unwrap all the packaging material of your binding machine
- Always unwind the cable completely
- Never insert the plug into the power socket before the whole set is installed
- Put the plug into the power socket and switch your machine on
- Your binding machine is now ready

How to use the binding machine

- Stack the pages you wish to bind neatly
- Take a Peleman cover with a spine size that corresponds to the number of pages in your document. Depending on the number of pages you can choose a 15, 40, 60, 80, 100, 120, 160, 190, 220, 280 or 340 cover.
- Put the documents into the cover. **1**
- Place the cover onto one of the binding compartments on the heating plate. The LED indication light is red. This means that the element starts to heat up. As long as this LED remains red, the binding is still in progress. Removing the cover at this time or adding another cover to the same compartment will result in poor binding quality. **2**
- You can, however, use the second binding compartment at the same time.
- The binding process is finished when the LED-indicator turns green.
- Remove the cover and place it into the crimper. The crimper will close automatically and crimp the spine for a neat finish. **3**
- To finish your presentation, place the cover onto the cooling compartment and wait until the cover cools down completely. **4**

Security

- Pay attention and be careful when moving your machine. The surface of the binding compartment heats up when the binding is in progress. Move the machine +/- 7 minutes after the last binding to ensure that the binding compartments have cooled down sufficiently.
- Never use your binding machine in a humid space. The surface on which the machine is placed should be horizontal.
- Your machine can only be used for the purposes as described in the manual.
- In case of a damaged machine and/or cable, please contact your local distributor (data on the invoice).
- Release voltage of the machine happens by switching off the machine using the power switch.
- Your machine should only be used in professional environments (office and industrial). It is prohibited to use the machine in domestic environment (e.g. home offices) where children could reach it.

Formats

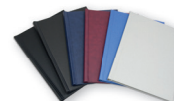
Size	15	40	60	80	100	120	160	190	220	280	340
Plus Flex Cover											
Max. sheets / cover	1-15	16-40	41-60	61-80	81-100	101-120	121-160		161-220		221-340
Pieces / pack	110	96	88	72	66	60	44		48		24
Spine Cover											
Max. sheets / cover	1-15	16-40	41-60	61-80							
Pieces / pack	100	100	100	80							
Thermal Hard Cover											
Max. sheets / cover	1-15	16-40	41-60	61-80	81-100	101-120	121-160	161-190	191-220	221-280	281-340
Pieces / pack	10	10	10	10	10	10	10	10	10	10	10
Soft Cover											
Max. sheets / cover		16-40	41-60	61-80							
Pieces / pack		40	40	40							



Plus Flex Cover



Spine Cover



Thermal Hard Cover



Soft Cover