

# User Manual Thermal Binding Machine 8.1

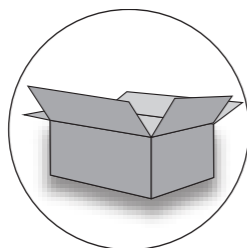


fig.1



fig.2

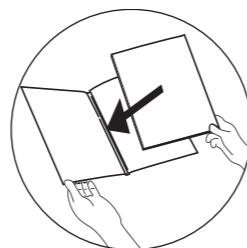


fig.3

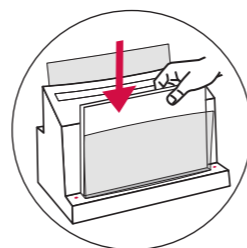


fig.4

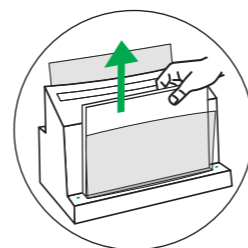


fig.5

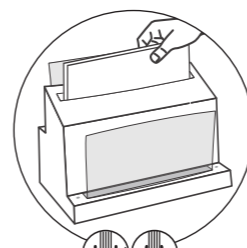


fig.6

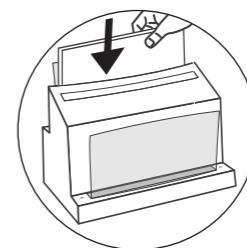


fig.7

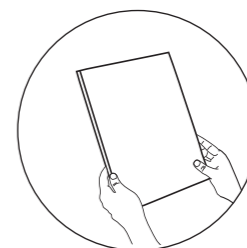


fig.8

## Voltage and type

For the type and line voltage we refer to the serial number label on the machine.

This machine is manufactured in accordance with all applicable national and international safety regulations.



Thermal Binding Machine 8.1

## Installation of your Thermal Binding Machine 8.1

- Unwrap all the packaging material (foil-cardboard) of the binding machine. *fig.1*
- Remove the washer and tape from the binding compartment.
- Always unwind the power cable completely.
- Never insert the plug into the power socket before the whole set is installed.
- Put the plug into the power socket. *fig.2*
- The binding machine is now ready for use.

Check if the voltage of the machine complies with the local line voltage before installing it.



## How to use your Thermal Binding Machine 8.1

- Neatly stack the sheets you wish to bind. *fig.3*
- Take a Peleman "Cover" with a spine size that corresponds to the number of sheets in your document. Depending on the number of sheets you can choose a cover from S up to L.
- Because of the crimping it is recommended to select a spine that is slightly larger than the thickness of your bundle of sheets.
- Put the documents into the Cover. *fig.3*
- Put the Cover in the binding compartment of your Thermal Binding Machine.

The LED indication on both ends of the binding compartment of your Thermal Binding Machine turns to red. *fig.4*

This means that the heating module starts heating up. As long as the LEDs remain red the heating is still in progress. Removing the Cover at this time or adding another Cover to the same compartment will result in a non-binding. The heating time is required to melt the resin, which will bind the document after cooling lower than 40°C.

- The heating process is finished, when the LEDs turn green. *fig.5*

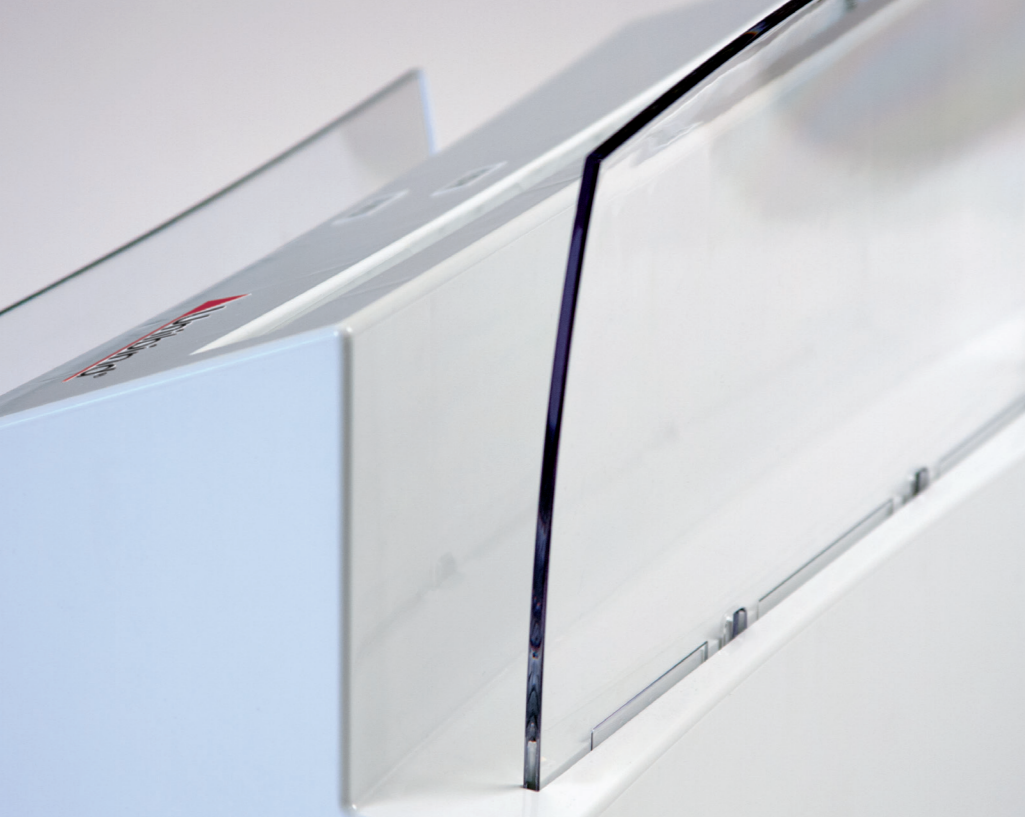
- Immediately insert the hot spine into the crimping compartment to crimp it. This will adjust the cover spine to the thickness of your document and push the sheets deeper into the still liquid resin to ensure a perfect binding. *fig.6*
- After crimping move the Cover over to the cooling compartment of your Thermal Binding Machine *fig.7* Let it cool for a few minutes.
- Your document is ready. *fig.8*

## Security

- Pay attention and be careful if you want to move the machine. The surface of the binding compartment remains hot for a while after the heating cycle has finished. Move the machine no sooner than  $\pm 7$  minutes after the last binding so the binding compartments have cooled down sufficiently.
- Never use the binding machine in a humid space. The surface on which the machine is placed needs to be horizontal.
- The machine can only be used for the purposes as described in the manual.
- In case of a damaged machine and/or cable, please contact your local distributor (details on the invoice).
- Repairing a Peleman machine may only be executed by an authorized person. Opening of the machine by an unauthorized person may lead to serious injury and damage to the machine. The electrical tension is released from the machine by removing the "main plug" from the wall socket, therefore the machine should always be installed near the wall socket and the wall socket should be easily accessible under all conditions.

## Spine sizes

Spine Size	Max. Sheets
15	max. 15
40	max. 40
60	max. 60
80	max. 80
120	max. 120



User Manual  
**Thermal Binding Machine 8.1**



**Peleman Industries Ltd.**  
13 Ayiou Procopiou Street  
2406 Engomi - Lefkosia  
Cyprus

Corporate Headquarters

**Peleman Industries NV**  
Rijksweg 7  
2870 Puurs  
Belgium

**Peleman Industries Inc.**  
11820 Wills Road Suite 100  
Alpharetta, GA 30009  
USA

User Manual  
**Thermal Binding Machine 8.1**

