

# Cotton Candy Machine

## ON-CC2S



# INSTRUCTION MANUAL

# CONTENTS

**CONTENTS** ..... 1

**SAFETY** ..... 1

**IMPORTANT SAFETY PRECAUTIONS** ..... 2

**SPECIFICATIONS & FEATURES** ..... 3

**PACKAGE CONTENT** .....4

**PARTS & ASSEMBLY** ..... 5

**PREPARATION** ..... 6

**OPERATION** ..... 7

**MAKING FLOSS** ..... 7

**CLEANNING & MAINTENANCE** ..... 8


**PROBLEMS & SOLUTIONS** ..... 10

**ELECTRICAL SCHEMATIC** ..... 11

**CERTIFICATE** ..... 11

## SAFETY

Your safety and the safety of others are very important. We have provided many important safety messages in this manual and on your appliance. Always read and obey all safety messages.



This is the safety alert symbol.

This symbol alerts you to potential hazards that can kill or hurt you and others.

All safety messages will follow the safety alert symbol.

All safety messages will tell you what the potential hazard is, tell you how to reduce the chance of injury, and tell you what can happen if the instructions are not followed.

# IMPORTANT SAFETY PRECAUTIONS

Your safety and the safety of others are very important. Read all instructions before operating this appliance.

	<p>When using an electrical appliance, basic Safety precautions should always be followed. Only trained personnel should operate this equipment. DO NOT use outdoors.</p>
	<p>Wear proper eye protection when servicing, cleaning or maintaining your machine such as safety glasses.</p>
	<p>To avoid injury, NEVER touch rotating head. All operators MUST keep their body well away when machine is in operation.</p>
	<p>Head surface are hot and should not be touched during turning and heating, or just after use. Do not make any alternations to your machine.</p>
	<p>Unplug from outlet when not in use and before cleaning. Allow to cool before putting on or taking off parts, and before cleaning the appliance. Machine must be properly grounded to prevent electrical shock. To protect against electric shock, do not immerse cord, plugs, or this appliance in water or other liquid.</p>

# SPECIFICATIONS & FEATURES

Model	ON-CC2	ON-CC2S
Material	Pink	Stainless steel
Machine Size	62X62X46CM	62X62X46CM
Net Weight	12.5kg	12.5kg
Motor Power	80W	80W
Heating Power	1500W	1500W
Voltage	230V	230V
Frequency	50Hz	50Hz
Yield	6-8 Kg/h	6-8 Kg/h



- 400g High capacity spinner head
- warms up quickly in 20 seconds
- working very quiet
- Sturdy metal construction
- stainless steel bowl
- 1500W big power
- simple use
- Professional Controls
- 80W heavy duty motor
- AC digital multi-function meter
- Side handle for easy moving
- Built in fuse for safety use
- Sugar Scoop Included to fill sugar in spinner
- Stainless steel pan, easy to clean with a damp cloth
- 4 rubber feet keep machine stable and avoid machine moving
- 1 x Scoop, 1 x Fuse
- Works continually
- Unit disassembles for easy cleaning and maintain
- CE listed
- one year parts warranty

## **PACKAGE CONTENT**

1 x Cotton Candy Machine

1 x Bowl

1 X Stabilizer net and clips

1 x Power Cord

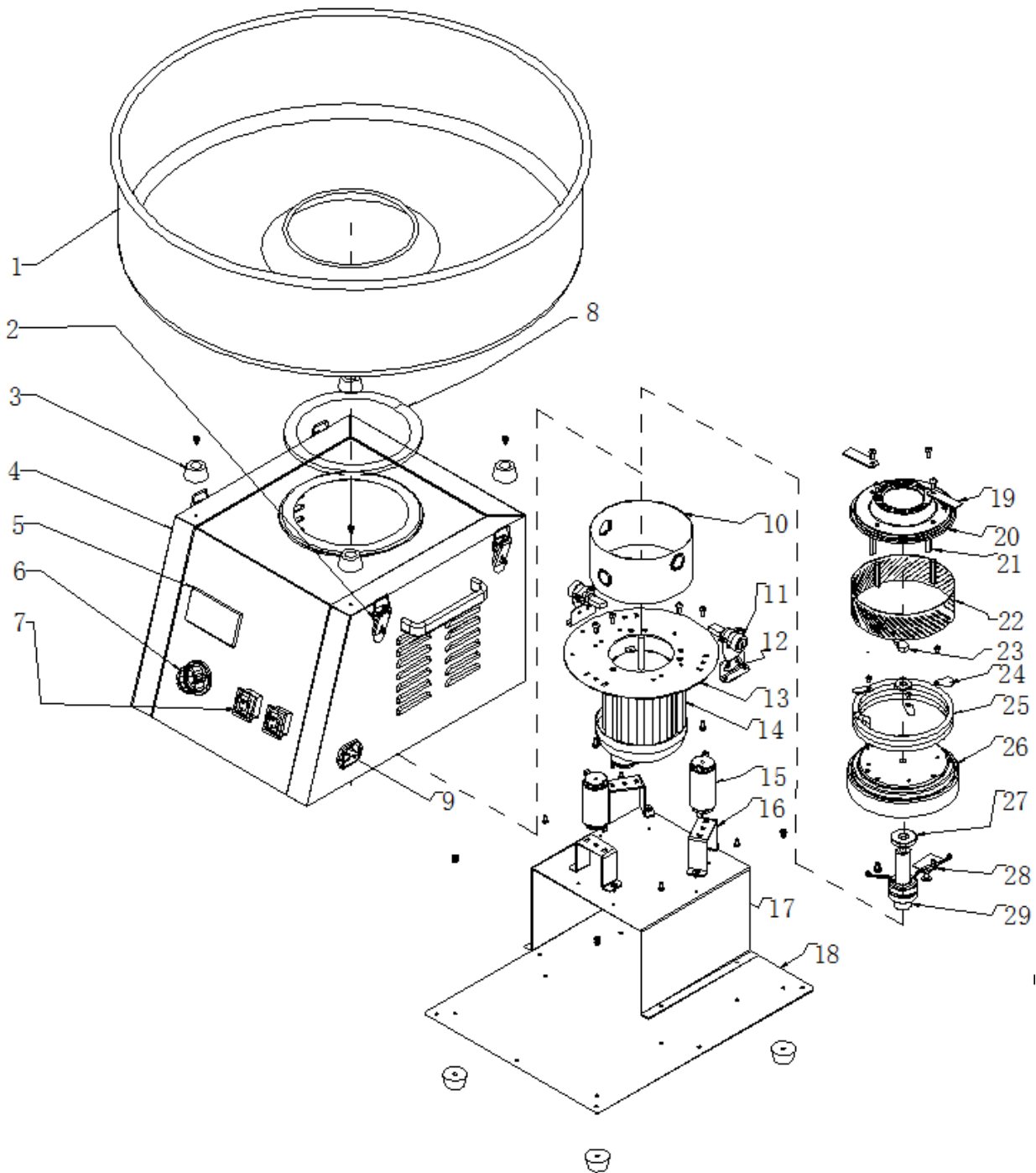
1 x Sugar Scoop

1 x Fuse

1 x 3mm hex wrench (used for take spinner head off)

1 x Owner's Manual

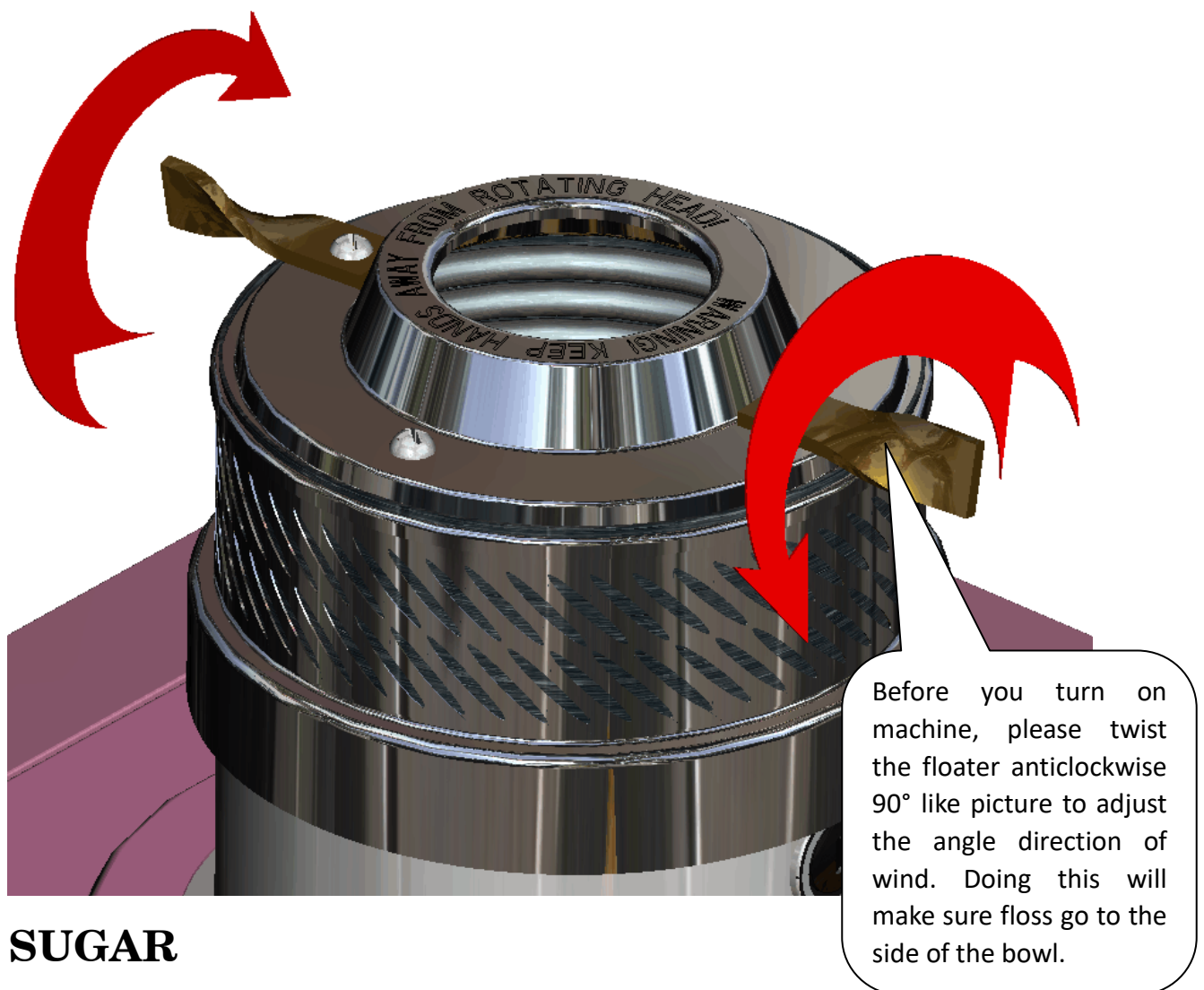
# PARTS & ASSEMBLY



1. Stainless steel bowl 2. Hasp Lock 3. Rubber feet 4. Cabinet 5. AC digital multi-function meter  
 6. Heat controller 7. Switch 8. PVC rubber ring 9. Power outlet 10. Safety guard 11. Carbon  
 brush 12. Carbon brush holder 13. Motor setting plate 14. Motor 15. Damper 16. Damper  
 holder 17. Damper Base 18. Bottom plate 19. Floater 20. Spinner head cover 21. Screw  
 column 22. Spinner net 23. Cap nut 24. Heating element presser 25. Heating element 26.  
 Spinner head base 27. Flat washer 28. Balancing weight 29. Conducting ring and axis

## PREPARATION

1. Read all instructions before using your cotton candy machine
2. Make sure the spinner head and bowl are clean
3. This product requires a properly-grounded  
240 volt supply with a 10 amp circuit for Europe  
120 volt supply with a 15 amp circuit for North America,
4. Keep your work area clean, well-lit and free of clutter or obstruction,  
make sure machine on a stable and level surface。
5. **Please turn/twist floater anticlockwise 90°, like this picture show.**



## SUGAR

Pure cane or beet sugar will do just fine. You can seek out medium coarse or sanding sugars. Free flowing sugars contain cornstarch which will burn onto your element/band clogging them rapidly. We have also seen some off-brand sugars that are a blend of sugar and dextrose or corn syrup. This product makes very poor cotton candy. Please make sure you get good sugar for your cotton candy machine.

If you want to mix your own. We suggest water pigment. If you use powder pigment, PLEASE DO NOT

USE EXCESS COLOR! Too much powder color will ruin the element on your machine and could create a bitter taste to the candy.

## **OPERATION**

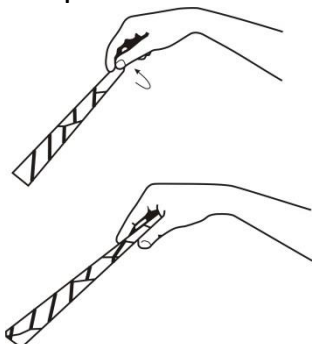
- 1. Place machine on a flat and stable surface.**
- 2. Please twist the leather anticlockwise. (Doing this candy floss will go to the side of the bowl.)**
- 3. Fill sugar into the spinner head 50-400g. Do not overfill floss head!**
- 4. Press MOTOR and HEAT switch to "ON" Position.**
- 5. Turn HEAT CONTROL knob clockwise to increase power and set "Power" at 800-900W. The LCD screen will display "Power"(Once the ideal Heat Control setting is found, operate with the setting near this position each time).**
- 6. Refill more sugar with scoop, when cotton floss coming out slow.**
- 7. When all sugar in the spinner head was finished, press HEAT switch to "OFF" position and allow the motor to run for at least 3-5 minute to "cool down" the spinner head, then turn the MOTOR Switch OFF.**

Note: Failure to cool down the floss head could result in leaving melted sugar in the floss head. If the motor is restarted, this melted sugar will exit the floss head and could cause burns.

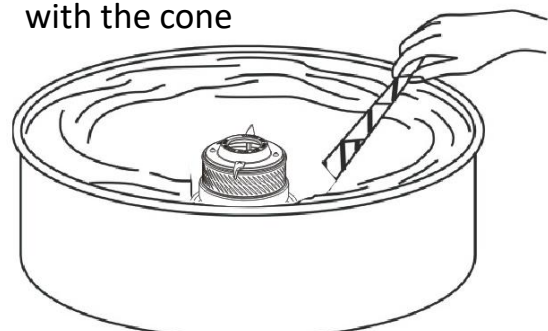
**OPERATION VIDEO:** <https://www.youtube.com/watch?v=JRscKSGlTVw>

## **MAKING FLOSS**

- 1. Grip cone as shown**



- 2. Break into web of floss with the cone**

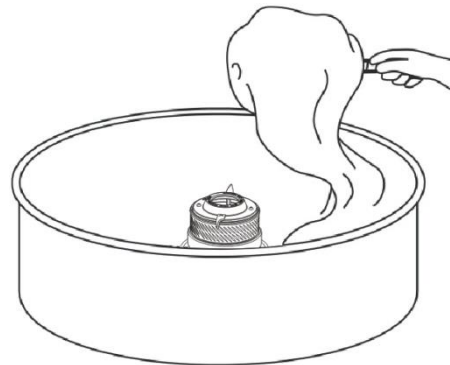




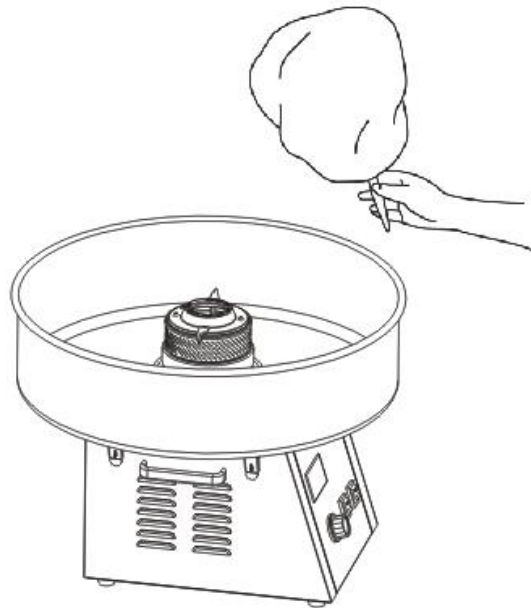
3. Lift web of floss from the pan



4. Roll onto the cone.



5.



**Note:** Humidity is not too high, or product will be "heavy".

## CAUTION

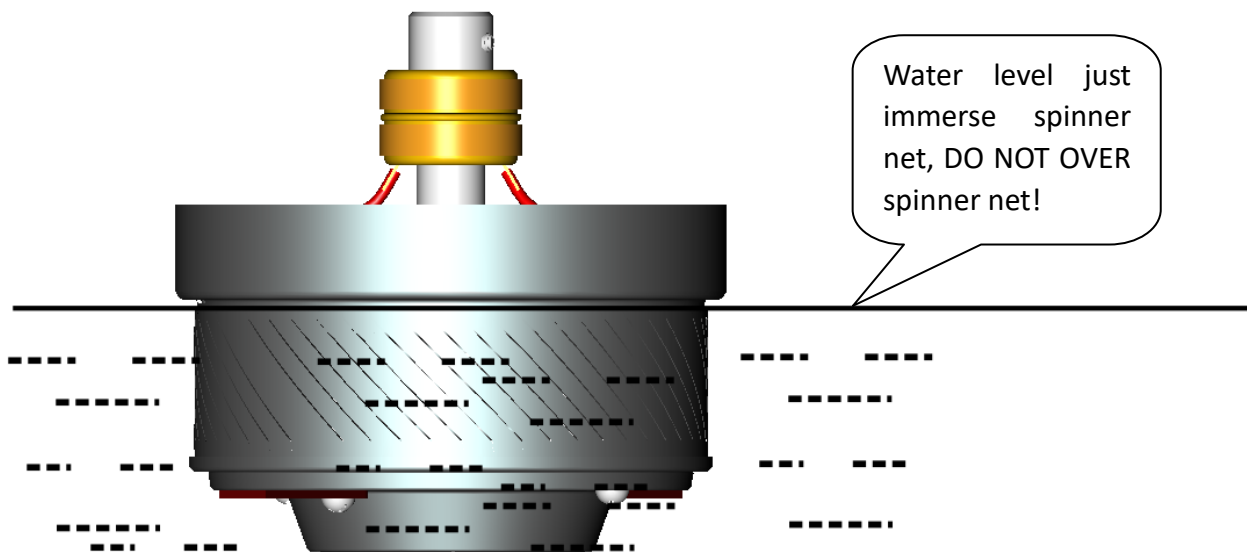
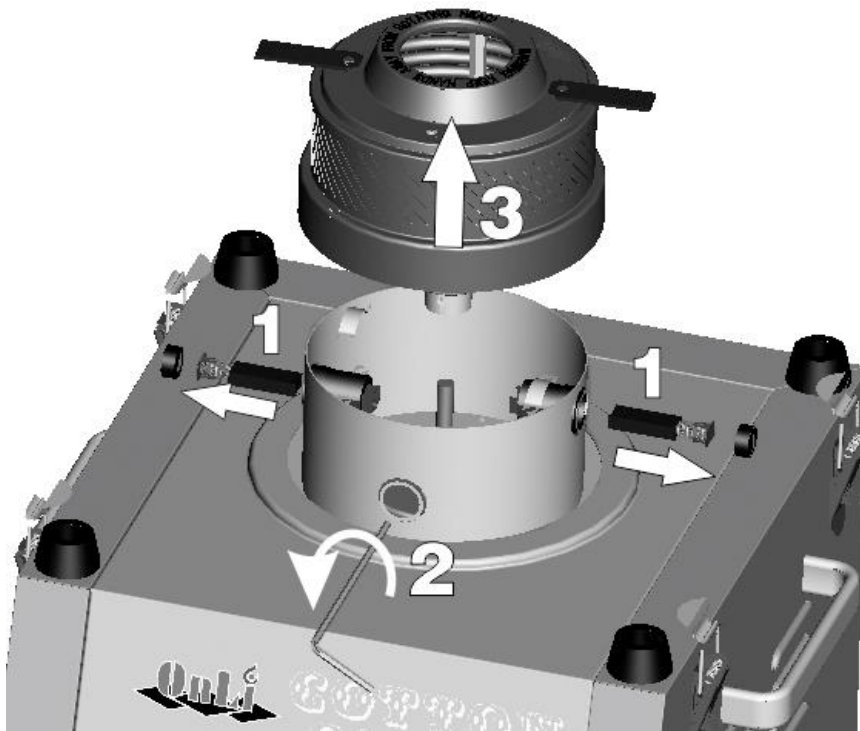
- WEAR eye protection such as safety glasses. Steam will come out, when pour water in the spinner head, wear glasses and be careful
- DO NOT pour water out of the spinner head. Make sure pour water in the hole of the spinner head.

## CLEANNING & MAINTENANCE

When completing operation for the day (or any prolonged period), You need clean spinner head, please unplug power sources before cleaning and follow the below steps and pictures.

1. Open cover of carbon brush at two side of safety guard, and take carbon brush out.

2. Open cover of mounting hole, turn spinner head slowly to find the position of inner hexagon screw on axis, than loosen hexagon screw with 3mm hex wrench.
3. Take spinner head off
4. Turn spinner head upside down in hot water, the water level just immerse spinner net, DO NOT OVER spinner net (make sure all electric part not contact with water). 20-30 minutes later, take spinner head out and clean water.
5. Install spinner head back, follow above 1-3 steps.



**CLEANING VIDEO:** <https://www.youtube.com/watch?v=aTg3Ftnfb3k>

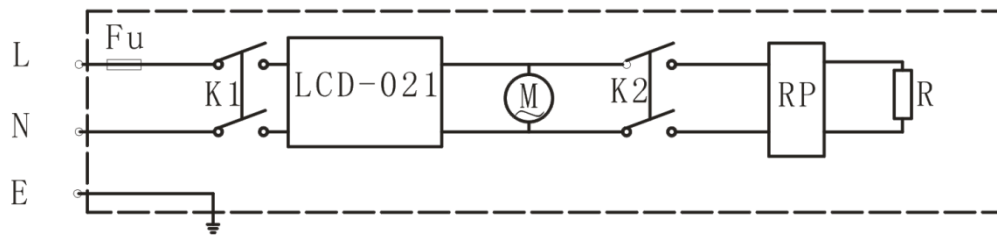
## CAUTION

- DO NOT put hands or objects in rotating spinner head.
- Operator should ALWAYS wear eye protection.
- DO NOT put hands near rotating spinner head.
- Use ONLY floss cone to collect cotton candy.

## PROBLEMS & SOLUTIONS

Problems	Solutions
Floss is coming a lot onto central/wrap spinner and not the outside bowl	Turn leather like page 6, to adjust wind direction angle. Make sure floss was blow to side of bowl
Machine no Power	1、 Check power cord connecting is right or not 2、 Check fuse
Big noise	1. Place machine on a flat and stable surface 2. Check spinner head was blocked or not
Spinner head heating, no floss come out	Clean the spinner head
Spinner head rotating speed slow	Open the machine at bottom to check belt is lose or not
Can't remove screws on spinner cover	Heating up spinner head and remove screws Caution: Be care full high temperature, use a moistened cloth cover spinner head to remove screws
Spinner head not heating up	1. Check wire lose or not 2. Check carbon brush was finished or not 3. Contact a qualified electrician

# ELECTRICAL SCHEMATIC



FU----15A Fuse      M---- Motor      PZEM---AC digital multi-function meter  
RP----Heat controller    R----1500W heating element

Note: Products shall be subject to any changes without additional notices.

## CERTIFICATE

Name: Cotton Candy Machine

Model: ON-CC2S

Number: \_\_\_\_\_

Inspector: 3

This product conforms to the standard after inspection requirements