



SoundEar®3

Mål, overvåg og håndtér støjen
med SE3-320

SoundEar®3 - 320 Specifications

Parameters:	Measures 3 measurements simultaneously LAF; LAS; LCpeak; Laeq, 1s, Laeq 1/4 h, Laeq 1/2h, Laeq 1 h.
Resolution:	0,1 dB for all parameters
Measuring Ranges:	RMS: Total 30 - 120 dB
Deviation:	+/- 0,5 dB
Frequency Range:	20Hz- 20 kHz
Frequency Weightings:	A- weighting (RMS), C-weighting (Peak)
Time Weighting:	Slow(1S) & Fast (125 ms)
Dynamic Range:	90 dB and peak detection
2 x outputs:	0-10 V or 4-20 mA
2 xUSB outputs:	Micro USB (power & PC) , USB OTG (Log, configuration)
Power Supply:	5VDC (Micro USB) / 24VDC (Screw terminal)
Current Consumption:	max 2,5 W
Internal memory:	16 MB(128 Mbit) (5-90 days log time, depending on log settings)



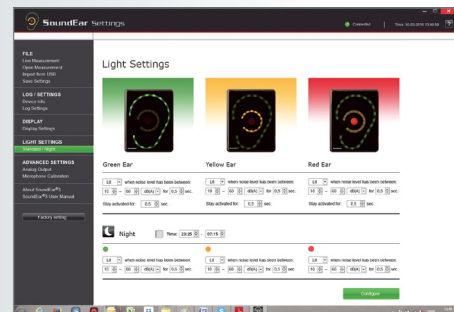
SoundEar®3 - grav



Ekstern mikrofon



USB nøgle til aflæsning af data



SoundEar®3 software

SoundEar A/S
www.soundear.dk



Real Time Clock:	Hi-precision type with battery backup (CR2032)
Microphone:	20 Hz- 20 kHz
Measurement 320:	Length: 150mm, Width: 120mm, Height: 45mm, Weight: 0.450 kg.
Standards:	IEC61672-2-2002, Type 2, ANSI 51.4 Type 260601-1: Medical electrical equipment- Part 1: general requirements for basic safety and essential performance. 60601-1-2_ Medical equipment - Part 1.2: General requirement - Part 1-2: General requirement for Basic safety and essential performance.
Connectivity accessories:	GSM module, 4 G module for Cloud solution